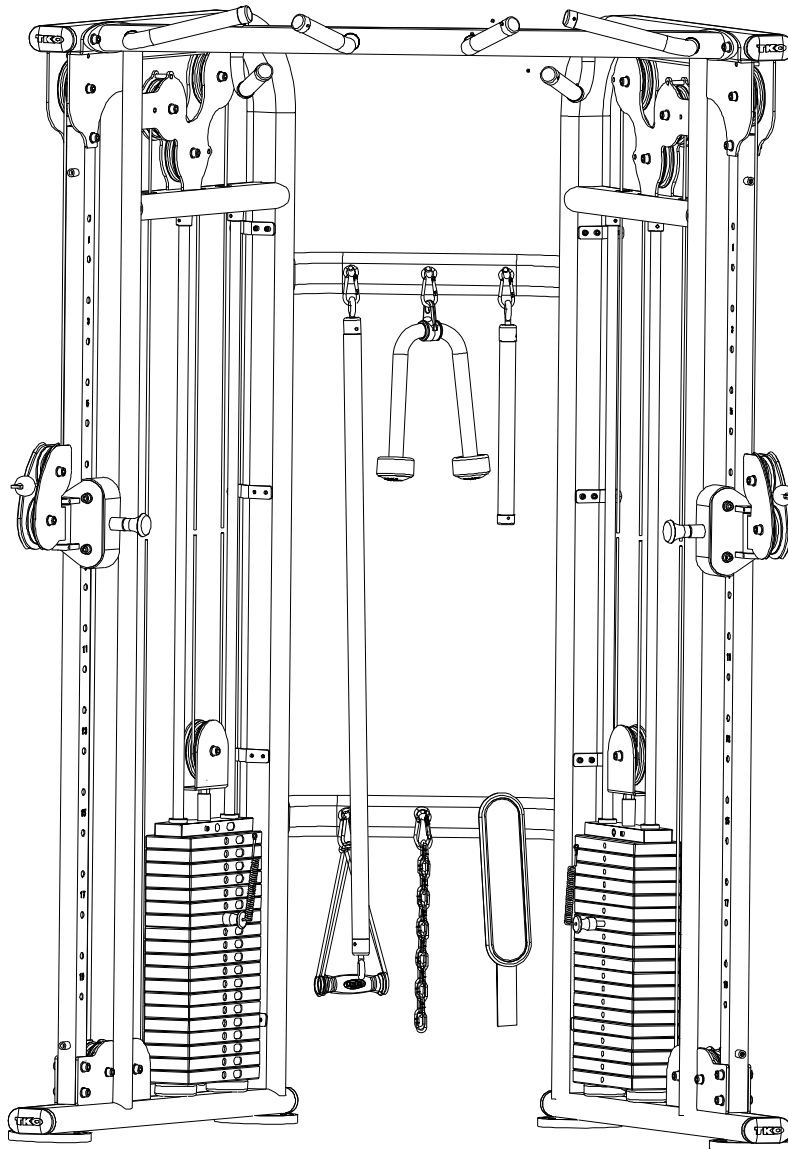
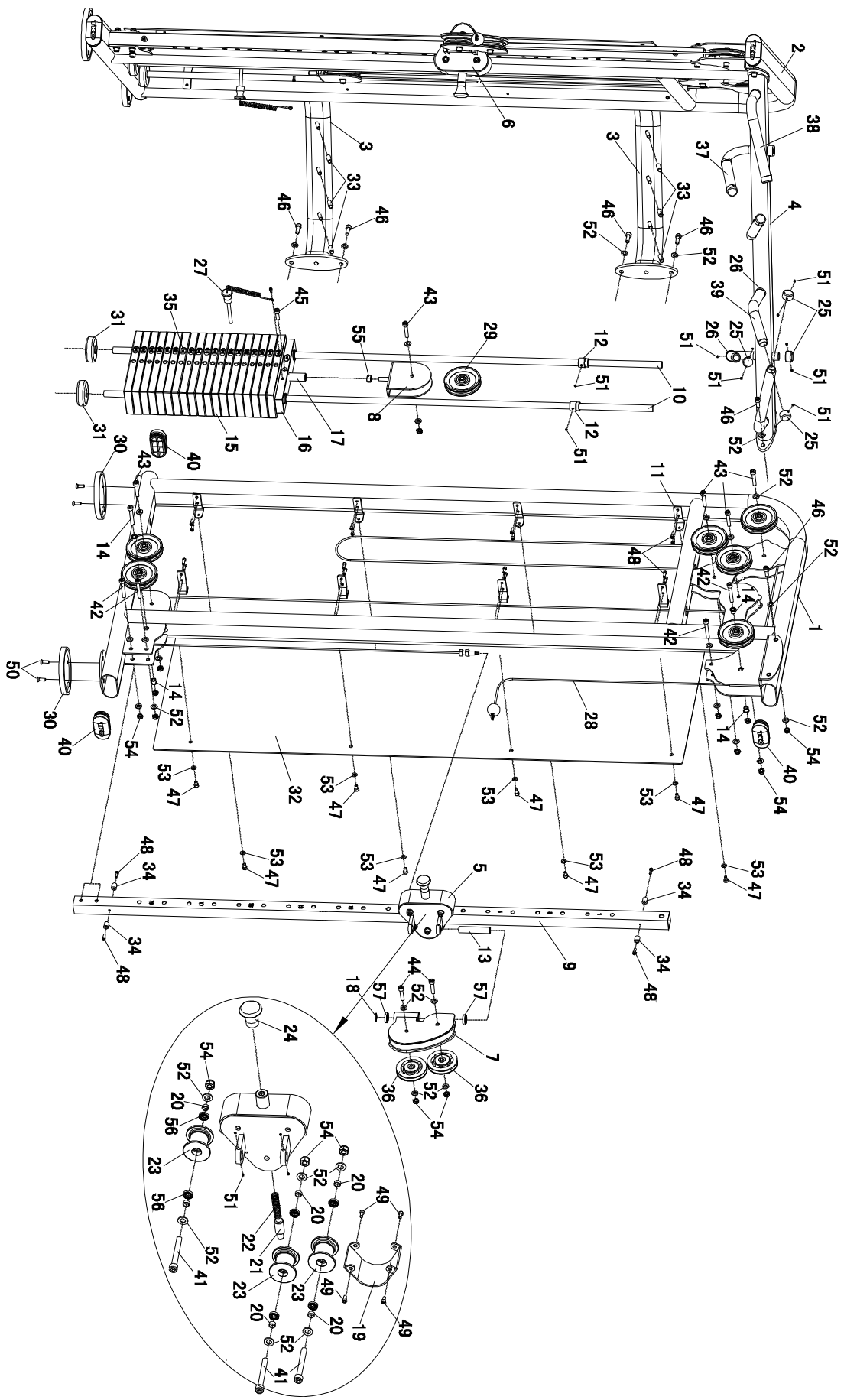


ITKO®

Model 9050 Function trainer



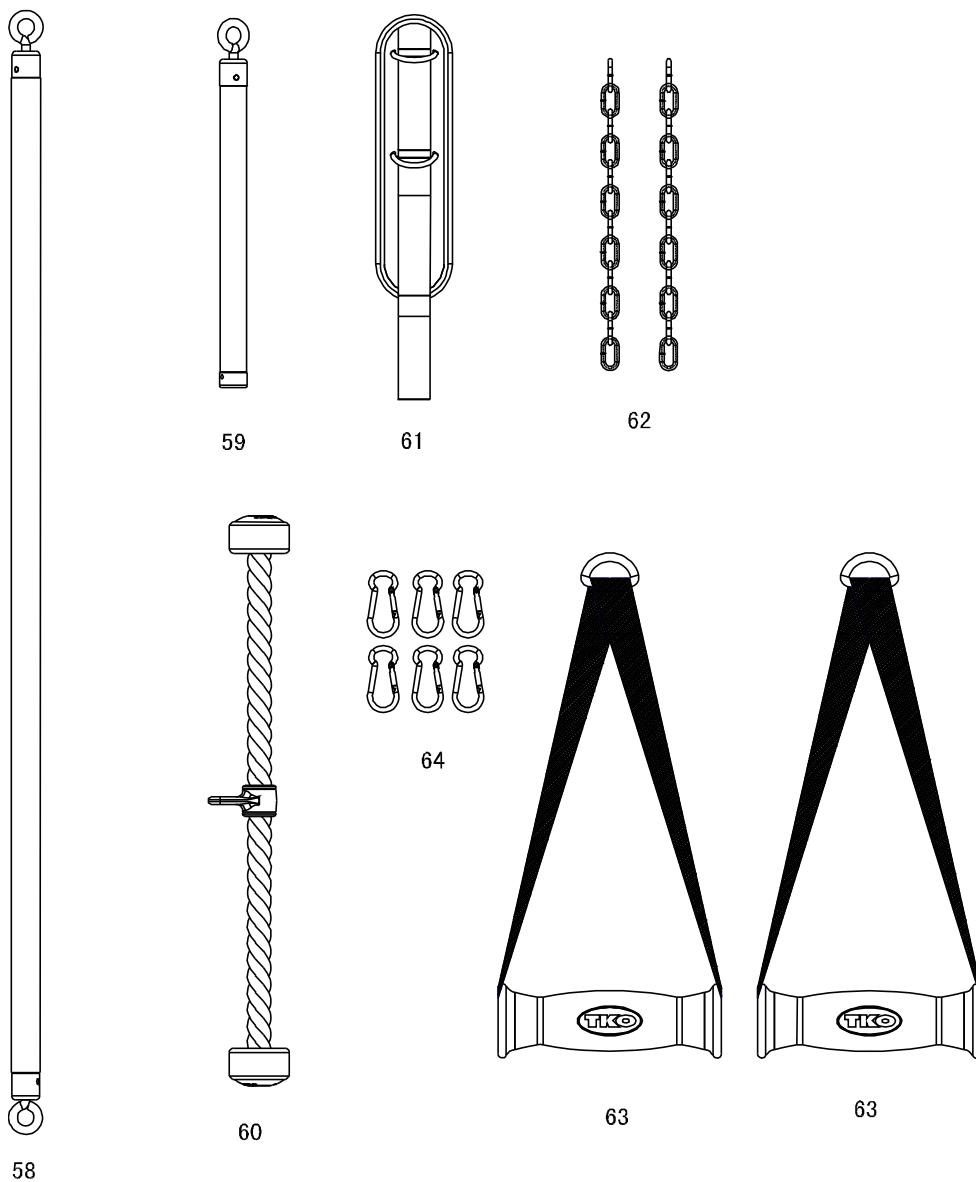
EXPLODED DRAWING



PARTS LIST

Part No.	Description	Q'ty	Part No.	Description	Q'ty
1	Left Main Frame	1	30	Rubber Foot Cap	4
2	Right Main Frame	1	31	Bumper Cushion	4
3	Cross Frame	2	32	Frame Cover	2
4	Upper Cross Frame	1	33	Hook Cover	6
5	Left Sliding Bracket	1	34	Rubber Bushing	8
6	Right Sliding Bracket	1	35	Number Sticker	2sets
7	Front Wheel bracket	2	36	Pulley ϕ 95mm	2
8	Middle Wheel Bracket	2	37	Foam Grip 160mm	2
9	Adjusting Square Tube	2	38	Foam Grip 345mm	2
10	Guide shaft	4	39	Foam Grip 295mm	2
11	Cover fixing bracket	16	40	Plastic End Cap	6
12	Bush for Guide Shaft	4	41	Allen Bolt M10x75mm	6
13	Pivot shaft	2	42	Allen Bolt M10x65mm	10
14	Bush For Wheel	8	43	Allen Bolt M10x50mm	10
15	10LB Weight Plate	38	44	Allen Bolt M10x45mm	4
16	Upper Weight Plate	1	45	Allen Bolt M10x30mm	2
17	Selecting Rod	2	46	Allen Bolt M10x25mm	12
18	Washer for Ball Bearing	2	47	Allen Bolt M8x10mm	16
19	Sliding Bracket Cover	2	48	Allen Bolt M6x15mm	40
20	Bush For sliding Wheel	12	49	Allen Bolt M5x10mm	10
21	Pin	2	50	Screw M8x20mm	8
22	Spring	2	51	Screw M6x4mm	34
23	Sliding wheel	6	52	Flat Washer M10	64
24	Knob	2	43	Flat Washer M8	16
25	Metal End cap	8	54	Lock Nut M10	30
26	Ring	6	55	Nut M12	2
27	Magnetic Pin	2	56	Ball Bearing 61800	12
28	Cable	2	57	Ball Bearing 61804	4
29	Pulley ϕ 115mm	14			

Accessory List



Part No.	Description	Q'ty	Part No.	Description	Q'ty
58	Handlebar	1	62	Chains	2
59	Lifting Rod	1	63	Hand Grip	2
60	Tricep Rope	1	64	Hook	6
61	Ankle Straps	1			

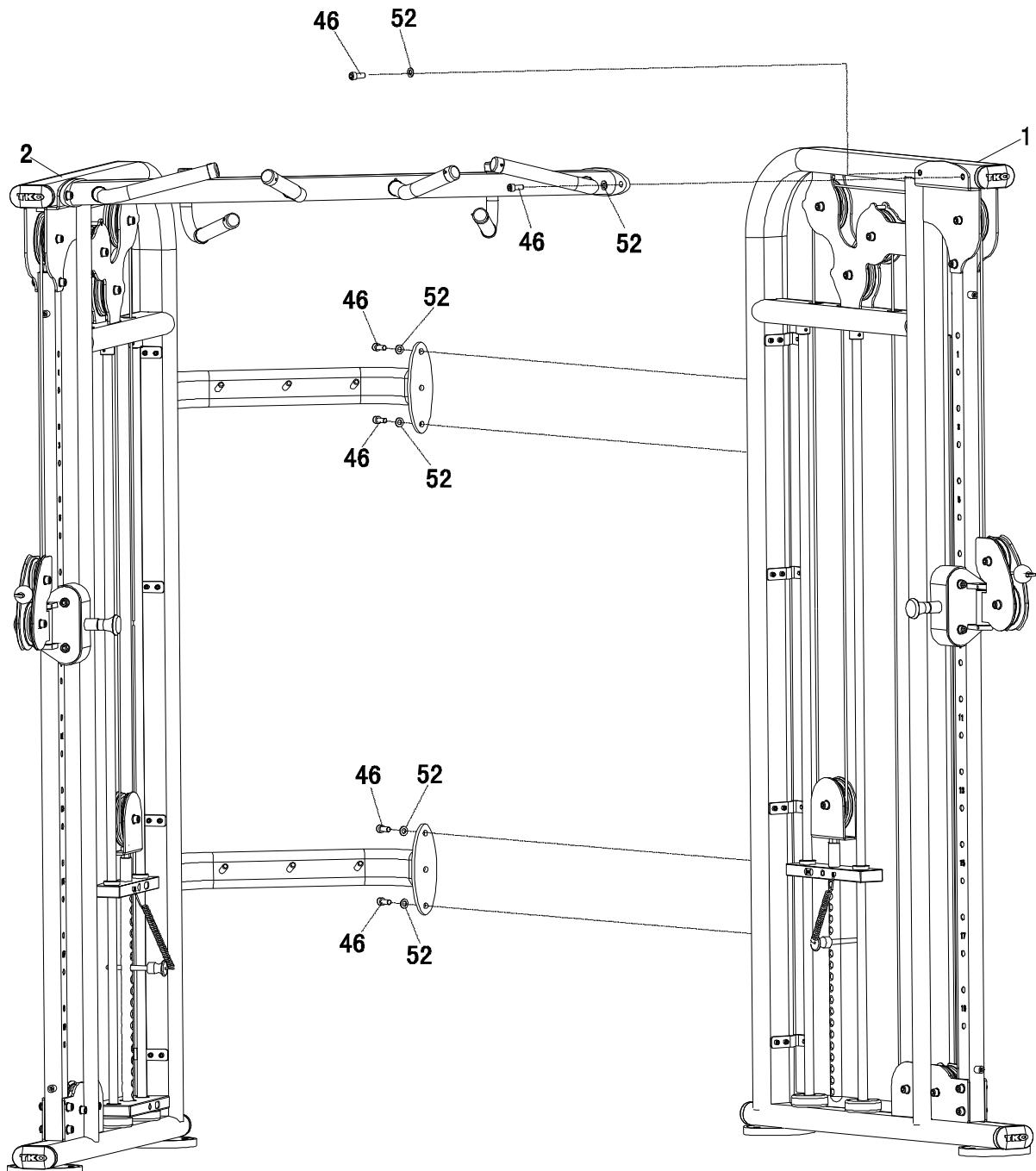
ASSEMBLY STEPS

Step 1.

Please attach the Cross Bar (3) to the Left Main Frame (1) and Right Main Frame (2), using 8 Allen Bolts (46) and 8 Flat Washers (52).

Attach the Upper Frame to the Left Main Frame (1) and Right Main Frame (2), using 4 Allen Bolts (46) and 4 Flat Washers (52).

Please make sure to tighten all the bolts.

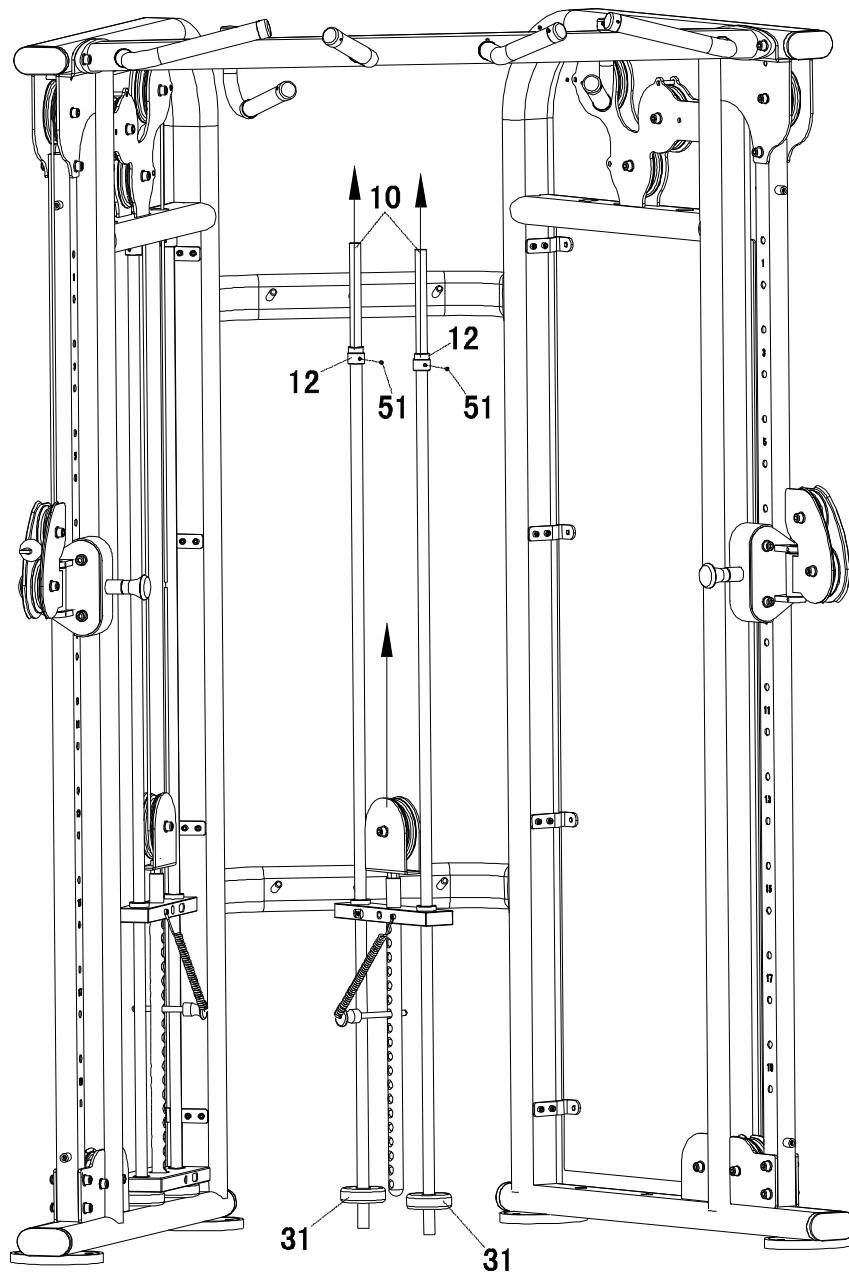


ASSEMBLY STEPS

Step 2.

Please loosen the Screw (51) that pre-assembled to the Left and Right Main Frames (1&2), remove the Bush for Guide Shaft (12) from the Guide Shaft (10).

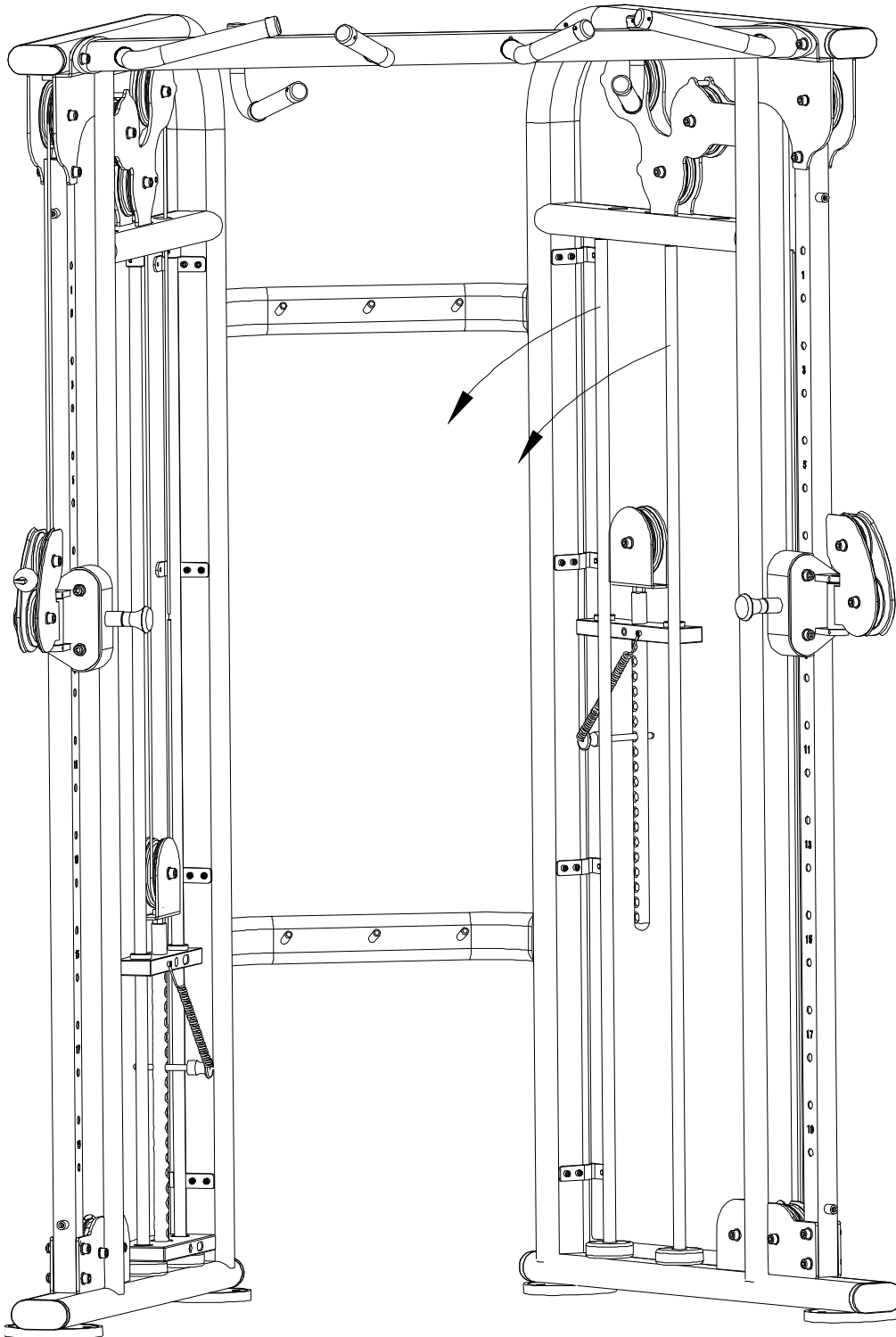
Then remove the pre-assembled set of Upper Weight Plate (16) and Selecting Rod(17) from the Guide Shaft (10).



ASSEMBLY STEPS

Step 3.

Please lean the Guide Shaft (10) inwards, but don't pull out from the frame.

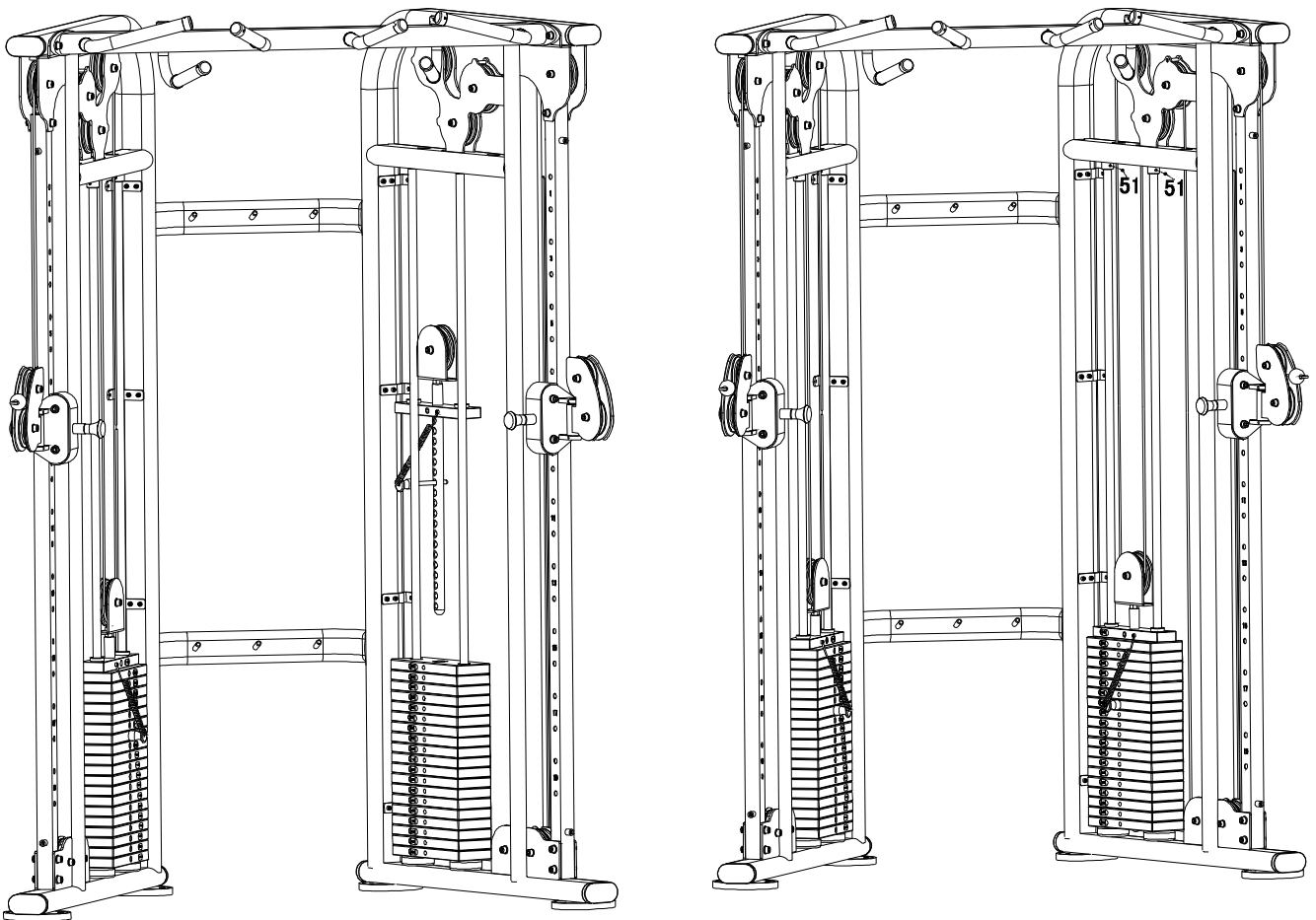


ASSEMBLY STEPS

Step 4.

Please put the Weight Plate (15) to the frame from the top of the Guide Shaft (10), each side to put 19 pieces Weight Plate (15), and then put back the pre-assembled set of Upper Weight Plate (16) and Selecting Rod (17).

Put back the Bush for Guide Shaft (12) to the Guide Shaft (10), make the Guide Shaft (10) to upright position, insert the Bush for Guide Shaft (12) to the hole of Frame (1&2), and then tighten the Screw (51),





TKO SPORTS GROUP USA LTD
7354 Denny Road
Suite 100
Houston, TX 77040
866-856-3488
www.tko.com